



Trail Marathon

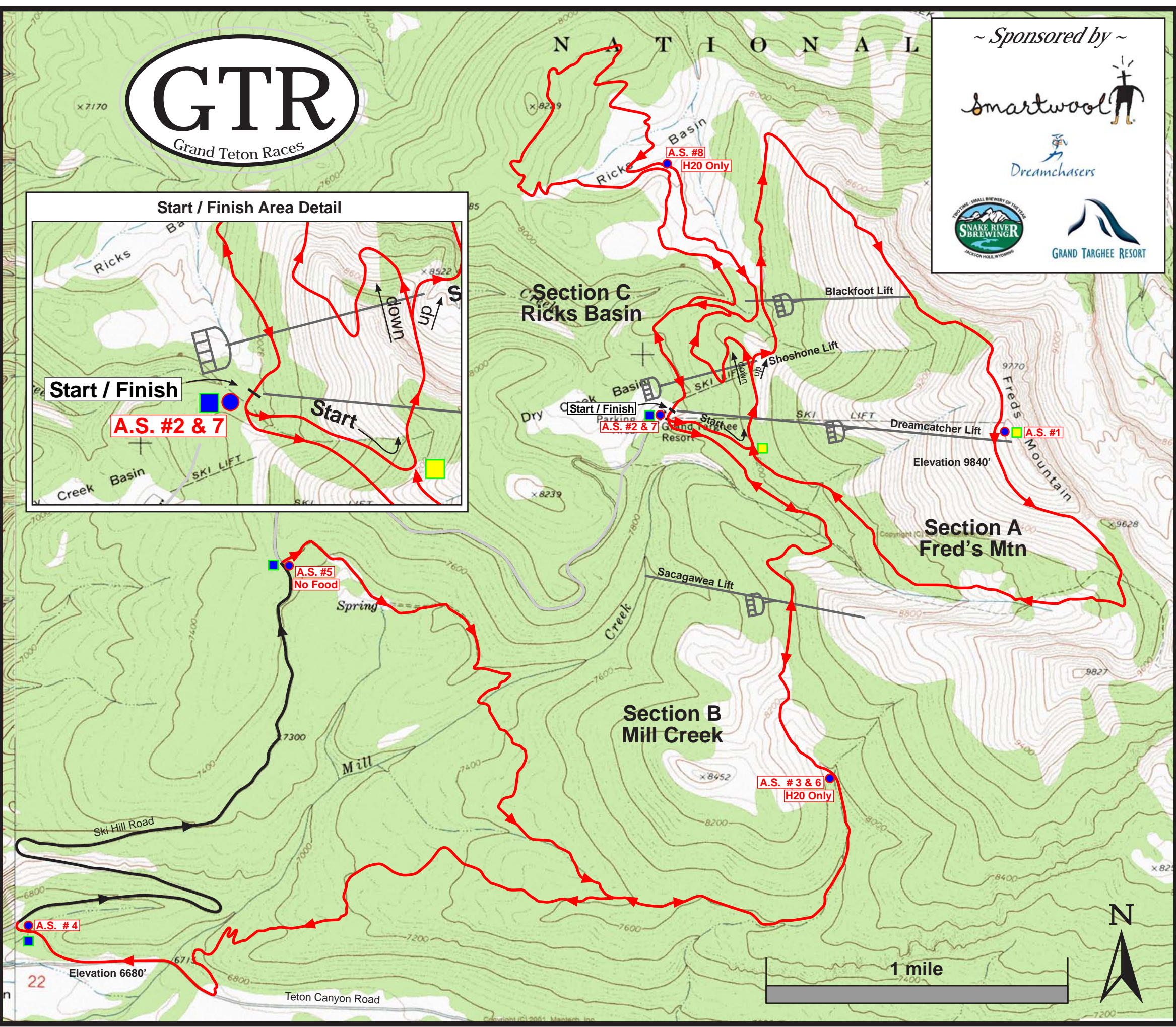
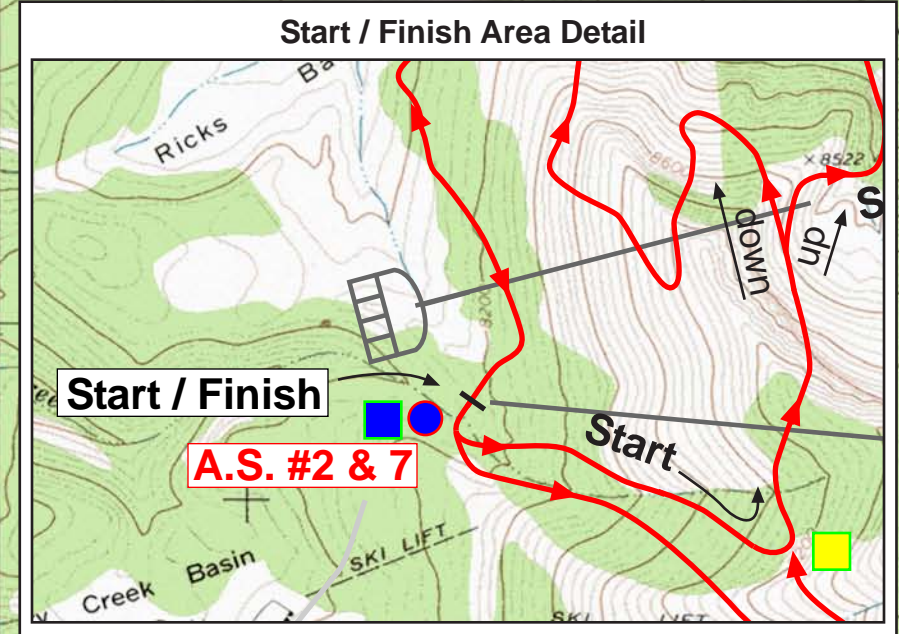
26.2 Miles

Course Description

The course starts at the base of the Grand Targhee Resort base area, in front of the Dreamcatcher chair, and follows the Teton Vista Traverse uphill. At roughly ¼ mile, the course turns left and follows the dirt cat-track to the top of the Shoshone Lift, then turns right and picks up the Bannock trail, which turns to single-track under the Blackfoot lift, and leads to the Fred's Mountain Aid Station, where it heads downhill, via the Teton Vista Traverse. The course turns right onto the same cat-track towards the top of the Shoshone lift. Just before reaching the top of the Shoshone lift, the course turns left and follows a single-track trail downhill towards Rick's Basin and turns LEFT when it intersects with the service road, which leads back to the Base Area aid station.

Exiting the Base area, the course heads south, following the dirt road uphill towards the Sacagawea lift, then into Teton Canyon using the Mill Creek Trail. After joining Teton Canyon Rd (a gravel road), the course turns right and follows this road until it dead-ends at Ski Hill Rd. It turns right and follows Ski Hill Rd for 3.3 miles then heads back into the forest at a large turnout on the right, which quickly becomes a 4WD trail. This trail rejoins the Mill Creek Trail after 2.2 miles, where it bends to the left and heads back to the base of Grand Targhee.

After passing through the Start/Finish area at the Base of the Dreamcatcher lift, the route continues north to Rick's Basin, mostly on single track trails, and follows Rick's Basin in a clockwise pattern. Upon exiting Rick's Basin, the course goes under the Blackfoot lift and heads back to the Base Area/Finish Line, completing one 26.2 mile lap.



Aid Stations - Marathon

# 1 Aid Station	2.8 miles
# 2 Aid Station	6.7 miles
# 3 Aid Station	8.6 miles
# 4 Aid Station	12.4 miles
# 5 Aid Station	15.7 miles
# 6 Aid Station	19.3 miles
# 7 Aid Station	21.2 miles
# 8 Aid Station	24.7 miles

	Aid Station
	Crew Access
	Crew Access - Limited
	One Way Trail
	Two Way Trail
	Pavement Section